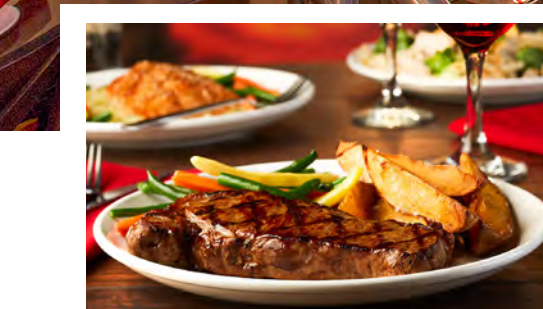
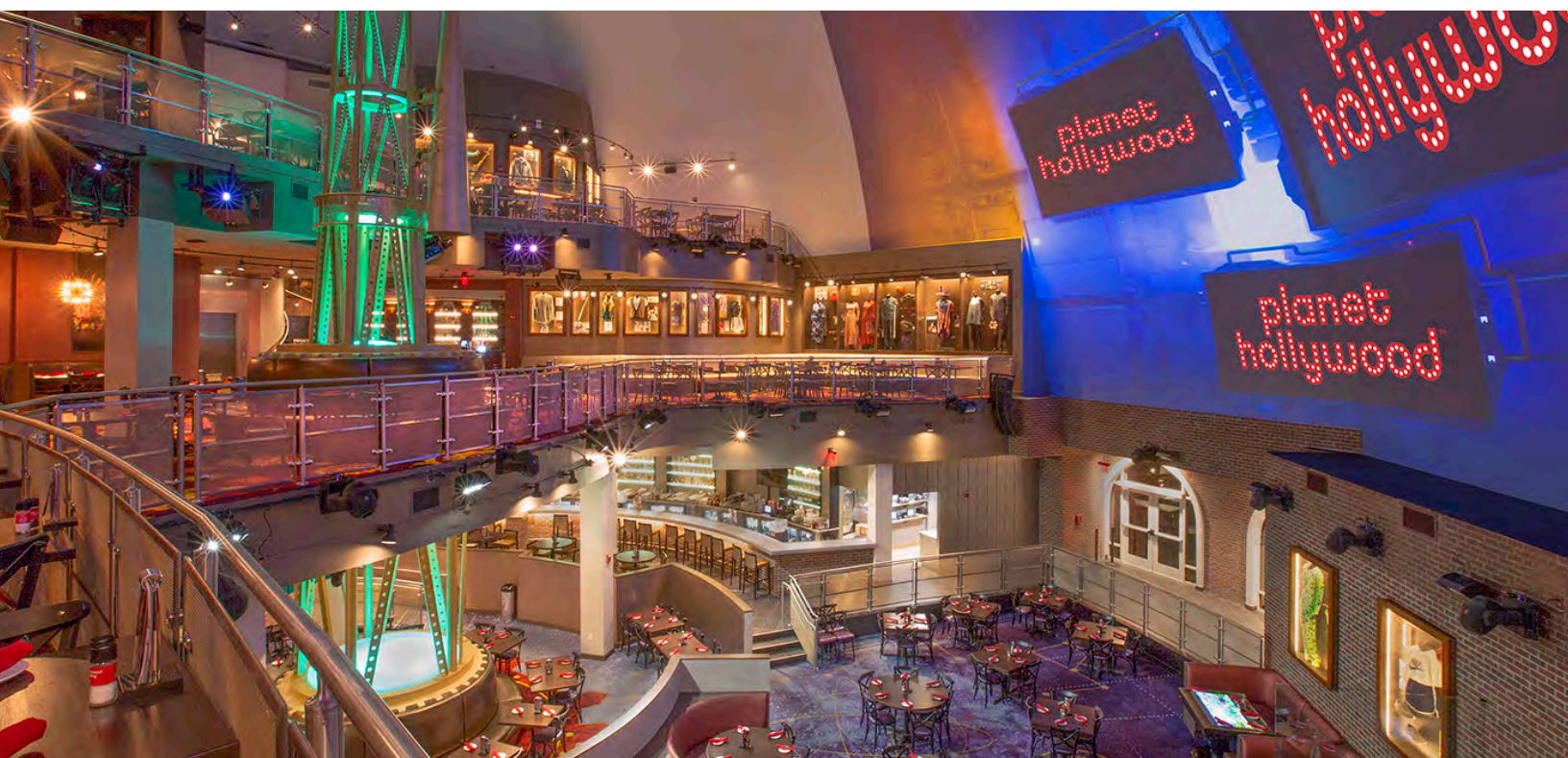


# PLANET HOLLYWOOD

*"Enter a realm where innovative cuisine, live entertainment and rare Hollywood memorabilia create a dazzling scene."*

Established January 27, 2017



## OVERVIEW

### Food & Beverage Capacity:

**870 Guests** (Terra: 240, The Terrace: 150, Lunar: 200, Galaxy: 130, Stargazers Bar: 150)

### Bar Capacity:

**255 Guests** (Terra: 75, Lunar: 30, Stargazers Bar: 150)

**Buyouts Allowed?** Yes, up to 1,100 Guests

### Large Group Capacity:

**Stargazers Bar:** up to 150 Guests

**Terra and The Terrace:** up to 500 Guests

**The Terrace:** up to 250 Guests

**Lunar:** up to 250 Guests,

**Galaxy:** up to 200 Guests

**Private Dining Rooms Available:** Exclusive VIP floor buyouts available for all levels and space

**A/V Set-Up Available?** Yes, includes tech support

**Custom menus available?** Yes

**Average Lunch Price Point (per person)?**

\$25, \$35 (with alcohol)

**Average Dinner Price Point (per person)?**

\$45, \$75 (with alcohol)

**F&B Minimum?** Not required for semi-private events

**Other offerings?** Live nightly DJ/VJ; Stargazers Bar offers nightly live entertainment and an eclectic collection of Florida craft brews



# SPLITSVILLE LUXURY LANES

*"Roll in and rock out with the entire family for exciting food, upscale fun and classic entertainment."*

**Established December 19, 2013**



## OVERVIEW

### **Food & Beverage Capacity:**

1600 Guests

### **Bar Capacity:**

Main Bar (1st floor): 50 Guests, Patio Bar (1st floor): 90 Guests, Balcony Bar (2nd floor): 115 Guests, Main Bar (2nd floor): 60 Guests, Billiard Bar: 30 Guests

### **Private Dining Rooms Available:** No

**Large Group Capacity:** Partial & Full Buyouts Available. Private and Semi-Private Spaces Available for Convention, Team-Building, Cocktail Events and more. Inquire for more details.

### **Average Lunch Price Point (per person)?**

\$13, \$25 (with alcohol)

### **Average Dinner Price Point (per person)?**

\$20, \$35 (with alcohol)

### **Buyouts Allowed?** Yes

### **Custom menus available?** Yes

### **A/V Set-Up Available?** Yes

**F&B Minimum?** Yes, pricing varies. Inquire for more details.

**Other offerings?** Fresh-Rolled Sushi; Hand-Tossed Pizzas; Gourmet Sliders; Custom Menu & Entertainment Options; A/V Accessibility



# PARADISO 37

*"Take a culinary tour of North, Central and South America at this waterfront spot at Disney Springs."*

Established June 2009



## OVERVIEW

### Food & Beverage Capacity:

409 Guests

### Bar Capacity:

50 Guests

### Buyouts Allowed? Yes

### Large Group Capacity:

Second floor can accommodate up to 100-150 Guests  
(including outdoor)

### Private Dining Rooms Available: No

### A/V Set-Up Available? Yes

Custom menus available? Yes

### Average Lunch Price Point (per person)?

\$32, \$40 (with alcohol)

### Average Dinner Price Point (per person)?

\$40, \$48 (with alcohol)

### F&B Minimum? No



# PADDLEFISH

*"Celebrate the freshest seafood while featuring steaks and chops for an elevated meal by land and sea."*

Established February 4, 2017



## OVERVIEW

### Food & Beverage Capacity:

525 indoor, 234 on outdoor deck

### Bar Capacity:

59 indoor, 65 on outdoor deck

### Buyouts Allowed? Yes

### Large Group Capacity:

Banquet seating for up to 525 guests, and up to 1,000  
Guests reception style.

### Private Dining Rooms Available:

**First Deck** - The Boil seats 50 inside & 65 outside for reception only. The Paddlewheel Room seats 100. **Second Deck** - The Constellation Room seats 90, The Market Room seats 98. **Third Deck** - The Bow seats 70. The Lounge seats 30. Full deck up to 200 guests reception-style.

**A/V Set-Up Available?** Offered for private restaurant events. Can be contracted with a rental fee.

**Custom menus available?** Yes

**Average Lunch Price Point (per person)?**

\$25-\$40

**Average Dinner Price Point (per person)?**

\$55-\$125

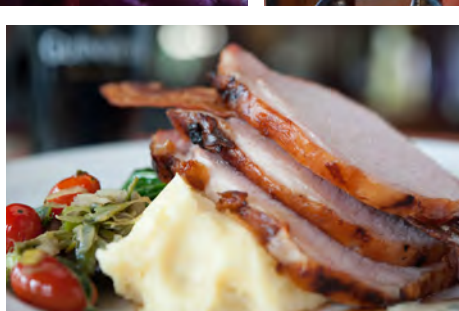
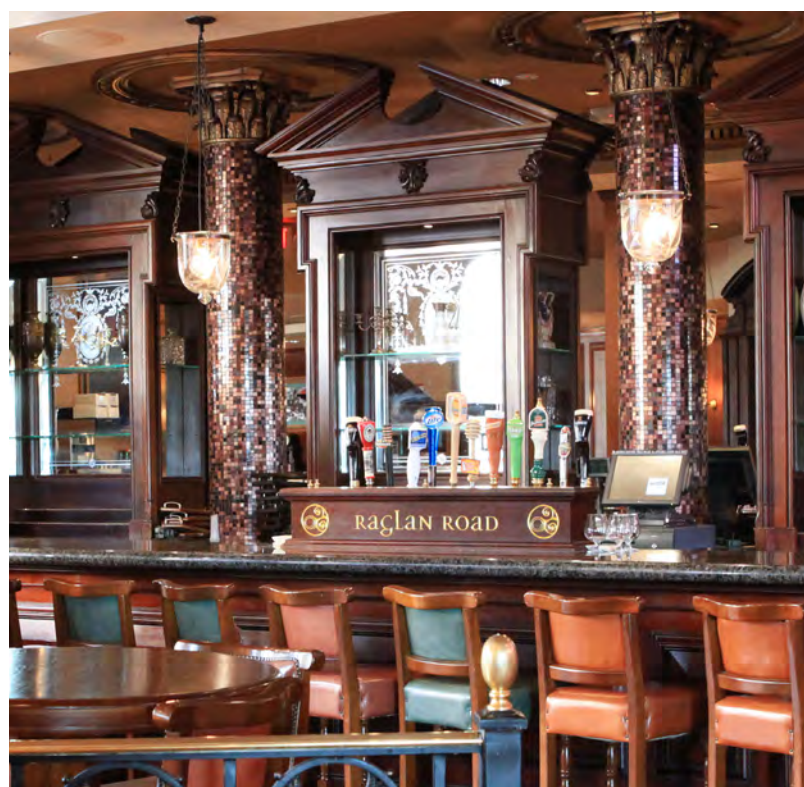
**F&B Minimum?** Varies based on season



# RAGLAN ROAD IRISH PUB & RESTAURANT

*"Step inside this authentic Irish pub and indulge your tastes in hearty meals, cold pints and nightly entertainment."*

Established October 21, 2005



## OVERVIEW

### Food & Beverage Capacity:

719 Guests

### Bar Capacity:

60 Guests

### Buyouts Allowed? Yes

### Large Group Capacity:

Accommodates groups of 20-700 with 4 bars and interior and exterior seating.

### Private Dining Rooms Available:

The Raglan Room - 75 Guests, The Music Room - 55 Guests.

### Semi-private spaces include:

The High Falutin' Snug - 23 Guests, The Library Bar - 30 Guests, The Tonsil Tickler Patio - 150-200 Guests.

### A/V Set-Up Available? Yes

Custom menus available? Yes

### Average Lunch Price Point (per person)?

\$22, \$25 (with alcohol)

### Average Dinner Price Point (per person)?

\$35, \$38 (with alcohol)

**F&B Minimum?** Yes, pricing varies depending on dates and times.



# HOUSE OF BLUES

*"Enjoy this live music club serving up southern and global flavors for lunch, dinner and a soulful Sunday brunch."*

**Established September 15, 1997**



## OVERVIEW

### Food & Beverage Capacity:

2500 Guests

### Bar Capacity:

175 Guests (25 in Restaurant & 150 in the Courtyard)

2100 Guests in the Music Hall

### Buyouts Allowed? Yes

### Large Group Capacity:

Entire venue can accommodate 2500 Guests

### Private Dining Rooms Available: Main Dining Room

(150), Lightning Room (100), Lightning Room with

Curtain (40), Voodoo Room (120), Music Hall 1<sup>st</sup> Floor

(600)

### A/V Set-Up Available? Yes

Custom menus available? Only for special events.

### Average Lunch Price Point (per person)?

\$17, \$26 (with alcohol) Special event (\$24, \$50)

### Average Dinner Price Point (per person)?

\$19, \$28 (with alcohol) Special event (\$40, \$65)

F&B Minimum? Yes, \$3,000-\$100,000+



# RAINFOREST CAFE

*"Traipse the jungle and tantalize your taste buds with flavorful American favorites and kid-friendly cuisine."*

Established August 1996



## OVERVIEW

### Food & Beverage Capacity:

725 Guests

### Bar Capacity:

Mushroom Bar - 99 Guests,

Lava Lounge - 125 Guests

### Buyouts Allowed? Yes

### Large Group Capacity:

1,200 Guests

### Private Dining Rooms Available: No

### A/V Set-Up Available? No

### Custom menus available? Yes

### Average Lunch Price Point (per person)?

\$25, \$30 (with alcohol)

### Average Dinner Price Point (per person)?

\$31, \$36 (with alcohol)

**F&B Minimum?** Yes, pricing varies depending on dates and times.

**Other Offerings?** There are interactive animatronics, and various themes from the distinct dining rooms.



# T-REX

*"From salads to steaks, tear into tasty tectonic plates that every creature in your family will enjoy."*

**Established October 2008**



## OVERVIEW

### **Food & Beverage Capacity:**

630 Guests

### **Bar Capacity:**

Octopus Bar - 80 Guests

### **Buyouts Allowed?** Yes

### **Large Group Capacity:**

1,000 Guests

### **Private Dining Rooms Available:** No

### **A/V Set-Up Available?** No

**Custom menus available?** Only for special events.

### **Average Lunch Price Point (per person)?**

\$22, \$28 (with alcohol)

### **Average Dinner Price Point (per person)?**

\$30, \$38 (with alcohol)

**F&B Minimum?** Yes, pricing varies depending on dates and times.

**Other Offerings?** There are interactive animatronics, and various themes from the distinct dining rooms.

Interior Ice Cave with dynamic lights can accommodate up to 100 Guests.



# MORIMOTO ASIA

*"Experience the finest in Pan-Asian cuisine as Chef Morimoto of Iron Chef America unveils his most exciting restaurant yet."*

**Established September 30, 2015**



## OVERVIEW

### **Food & Beverage Capacity:**

500 Guests

### **Bar Capacity:**

80 Guests (40 upstairs & 40 downstairs)

### **Buyouts Allowed?** Yes

### **Large Group Capacity:**

Groups of 15-500 Guests

**Private Dining Rooms Available:** : 4 Private Dining Rooms can accommodate 6-8 guests each. Rooms can be combined to fit up to 36 Guests. Private dining dinner menus start at \$75 per person.

**A/V Set-Up Available?** Please inquire for options.

**Custom menus available?** Yes

### **Average Lunch Price Point (per person)?**

\$32++

### **Average Dinner Price Point (per person)?**

\$125++

**F&B Minimum?** Yes, pricing varies depending on dates and times.

**Other Offerings?** The Forbidden Lounge (2nd floor) features a private entrance, The Forbidden Lounge, Sushi Bar, semi-private interior Promenade Dining area and exterior Promenade Patio. Can be used together or individually for groups of 15-150 Guests.



# STK ORLANDO

*"Retreat to this chic hideaway for an ultra-modern steakhouse experience - featuring an innovative menu, in-house DJ and a stunning outdoor patio."*

Established May 26, 2016



## OVERVIEW

### Food & Beverage Capacity:

700 Guests (472 seated)

### Bar Capacity:

38 Guests (28 Main Bar, seated & 10 Rooftop Bar, seated)

### Buyouts Allowed? Yes

**Large Group Capacity:** Parties of 11 and up - please inquire for options and availability

### Private Dining Rooms Available: Main Dining Room:

up to 170 seated, **Tempest Storm:** up to 18 seated, **Rooftop**

**Main Dining:** up to 80 seated, **The Terrace:** up to 80 seated,

**The Fire Pit:** up to 28 reception, **The Balcony:** up to 20

seated, **The Patio:** up to 40 seated

**A/V Set-Up Available?** Yes, fees may apply

**Custom menus available?** Yes

**Average Lunch Price Point (per person)?**

\$45-\$65 (without alcohol)

**Average Dinner Price Point (per person)?**

\$85-\$155 (without alcohol)

**F&B Minimum?** Yes, pricing varies depending on dates, times, and amount of people



# FRONTERA COCINA

*"Enjoy exciting flavors and a contemporary Mexican experience with your closest friends and family in a lively atmosphere headed up by seven-time winner of the James Beard Foundation Award, Chef Rick Bayless."*

Established June 27, 2016



## OVERVIEW

### Food & Beverage Capacity:

176 Guests (136 inside, 40 patio)

### Bar Capacity:

22 Guests

**Buyouts Allowed?** Max 60 individuals per party.  
larger parties to be accepted in the near future.

**Private Dining Rooms Available?** No

**Private Dining Rooms Available:** No

**A/V Set-Up Available?** Yes

**Custom menus available?** Yes, but options  
are limited.

**Average Lunch and Dinner Price Point  
(per person)?**

\$23 - \$51

**F&B Minimum?** No



# CHEF ART SMITH'S HOMECOMIN'

*"Dig into delectable farm-to-fork cuisine showcasing Florida's fresh flavors-  
all crafted from recipes by Chef Art Smith."*

**Established July 12, 2016**



## OVERVIEW

### **Food & Beverage Capacity:**

300 reception style, 175 seated

### **Bar Capacity:**

28 seats (20 inside, 8 outside)

**Buyouts Allowed?** Yes, (Convention, Corporate, Wedding Rehearsals & Receptions, and Cocktail Events)

**Large Group Capacity:** 2 dining areas that can accommodate 35-45 Guests or full venue buyout for 150-300 Guests.

**Private Dining Rooms Available:** 2 semi-private rooms available. The Porch and The Springs Rooms - each can accommodate 70 reception style (35-45 seated.)

**A/V Set-Up Available?** Yes

**Custom menus available?** Yes

**Average Lunch Price Point (per person)?**

\$20, \$35 (with alcohol)

**Average Dinner Price Point (per person)?**

\$30, \$45 (with alcohol)

**F&B Minimum?** Yes, depending on dates and times

**Other?** Fresh, Florida farm sourced; Handcrafted Moonshine & Resort Cocktails; Southern Favorites: Chef Art's Famous Fried Chicken, Shrimp & Grits, Shine Cake; Live Entertainment Options; Indoor & Outdoor Event Space; Customized events for 15-500 people & Multiple concept buyouts for 500-2000 people.



# WINE BAR GEORGE

*"Experience masterfully paired wine and food led by Master Sommelier George Miliotes."*

Established May 19, 2018



## OVERVIEW

### Food & Beverage Capacity:

200 Guests

### Bar:

150 seats (second floor)

**Buyouts Allowed?** Yes

**Large Group Capacity:** 6-200 Guests

**Private Dining Rooms Available:** 7 private dining areas that can accommodate 2-200 guests. Rooms can be combined as well for additional capacity.

**A/V Set-Up Available?** Yes

**Custom menus available?** Yes

**F&B Minimum?** Yes, depending on dates and times

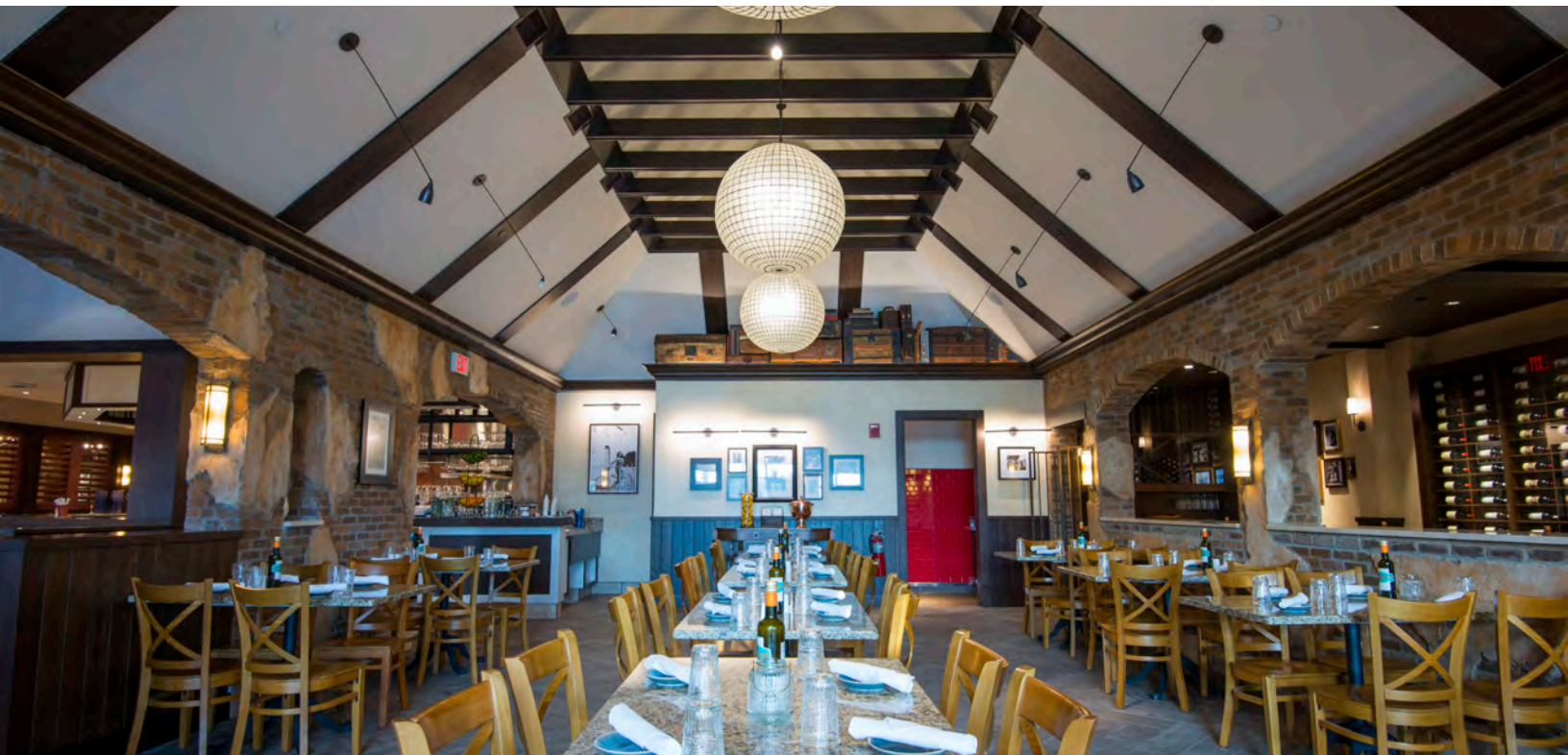
**Other?** With custom event planning from start to finish, events at Wine Bar George are tailored to each individual need. Receptions and seated events are entertaining and engaging with Master Sommelier and Certified Sommelier led wine tastings and pairings. As one of fewer than 250 Master Sommeliers in the world, George Miliotes' expertise and enthusiasm for wine and food paired together brings a new and fun element to both professional and social events.



# TERRALINA CRAFTED ITALIAN

*"Delight in a dining experience with sweeping waterfront views and authentic Italian home cooking."*

Established June 28, 2018



## OVERVIEW

### Food & Beverage Capacity:

300 Guests inside, 200 outside

### Bar Capacity:

50 indoor, 75 outdoor Veranda Bar

**Buyouts Allowed?** Yes, inquire for details

**Large Group Capacity:** 225 seated, 500 reception-style

**Group Dining Rooms Available:** The Wine Room: 24

seated, The Conservatory: 24 seated, The Great Room:

46 seated (combined with The Wine and Conservatory for

100 seated or 125 reception-style) The Alcove: 24 seated,

The Courtyard Dining: 60 seated, The Lakeside Terrace:

40 seated, The Lakeside Patio: 24 seated

**A/V Set-Up Available?** For full buyouts only

**Custom menus available?** Yes

**Average Lunch Price Point (per person)?**

\$20-\$40

**Average Dinner Price Point (per person)?**

\$45-\$75

**F&B Minimum?** Yes, varies on event details



# MARIA & ENZO'S

*"Step into the golden age of air travel when you savor authentic Italian cuisine inside this stunning trattoria."*

Established January 5, 2018



## OVERVIEW

### Food & Beverage Capacity:

400 Guests

### Bar Capacity:

No bar

### Buyouts Allowed? Yes

**Large Group Capacity:** Groups of 15-500 Guests

### Private Dining Rooms Available:

Only semi-private spaces offered for up to 50 guests.  
Anything over 50 guests would be a Buyout of the restaurant.

**A/V Set-Up Available?** Please inquire for options

**Custom menus available?** Yes

**Average Lunch Price Point (per person)?**

\$28++

**Average Dinner Price Point (per person)?**

\$65++

**F&B Minimum?** Yes, pricing varies depending on dates and times.

**Other Offerings?** Enzo's Bridge Patio and Promenade available along with Enzo's Tunnel seating



# ENZO'S HIDEAWAY

*"Sip on prohibition-era cocktails and enjoy delicious bites at a tunnel bar exuding an intimate, 1920s speakeasy-vibe."*

Established January 5, 2018



## OVERVIEW

### Food & Beverage Capacity:

200 Guests

### Bar Capacity:

20-30 Guests

**Buyouts Allowed?** Yes

**Large Group Capacity:** Groups of 15-200 Guests

**Private Dining Rooms Available:** Only semi-private rooms available for up to 50 Guests

**A/V Set-Up Available?** Please inquire for options

**Custom menus available?** Yes

**Average Lunch Price Point (per person)?**

\$32++

**Average Dinner Price Point (per person)?**

\$55++

**F&B Minimum?** Yes, pricing varies depending on dates and times.

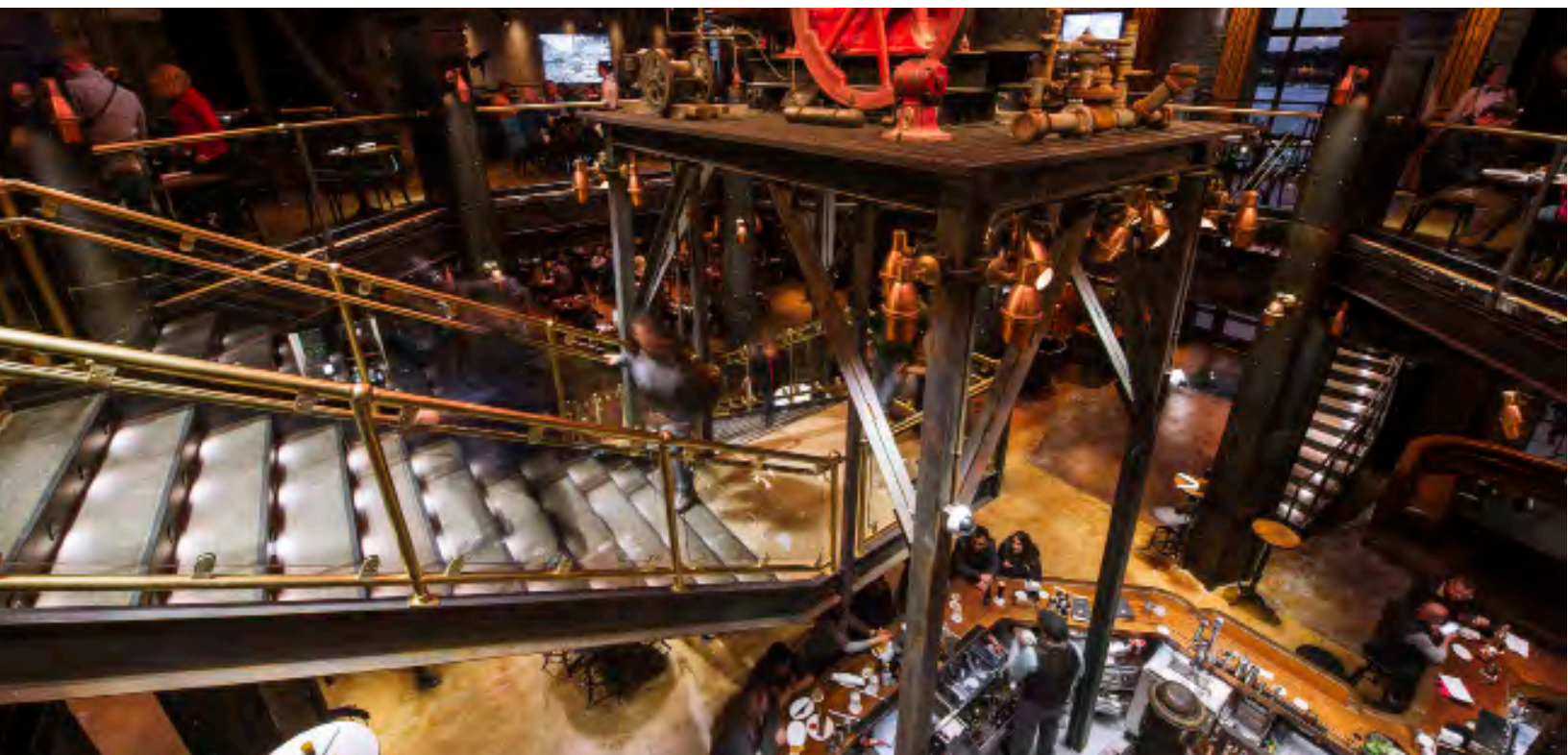
**Other Offerings?** Outside Lakeview Terrace



# THE EDISON

*"Swing by this lavish, industrial gothic-style hotspot for classic American cuisine, craft cocktails and unique entertainment."*

Established January 5, 2018



## OVERVIEW

### Food & Beverage Capacity:

450 Guests

### Bar Capacity:

60 Guests: **Breaker Bar**, 20 Guests: **Patent Bar**, and

50 Guests: **Boiler Bar**

### Buyouts Allowed? Yes

**Large Group Capacity:** Groups of 15-450 Guests

**Private Dining Rooms Available:** Semi-private spaces offered for various group sizes. Buyout of the 2nd level only available.

**A/V Set-Up Available?** Please inquire for options

**Custom menus available?** Yes

**Average Lunch Price Point (per person)?**

\$29++

**Average Dinner Price Point (per person)?**

\$80++

**F&B Minimum?** Yes, pricing varies depending on dates and times.

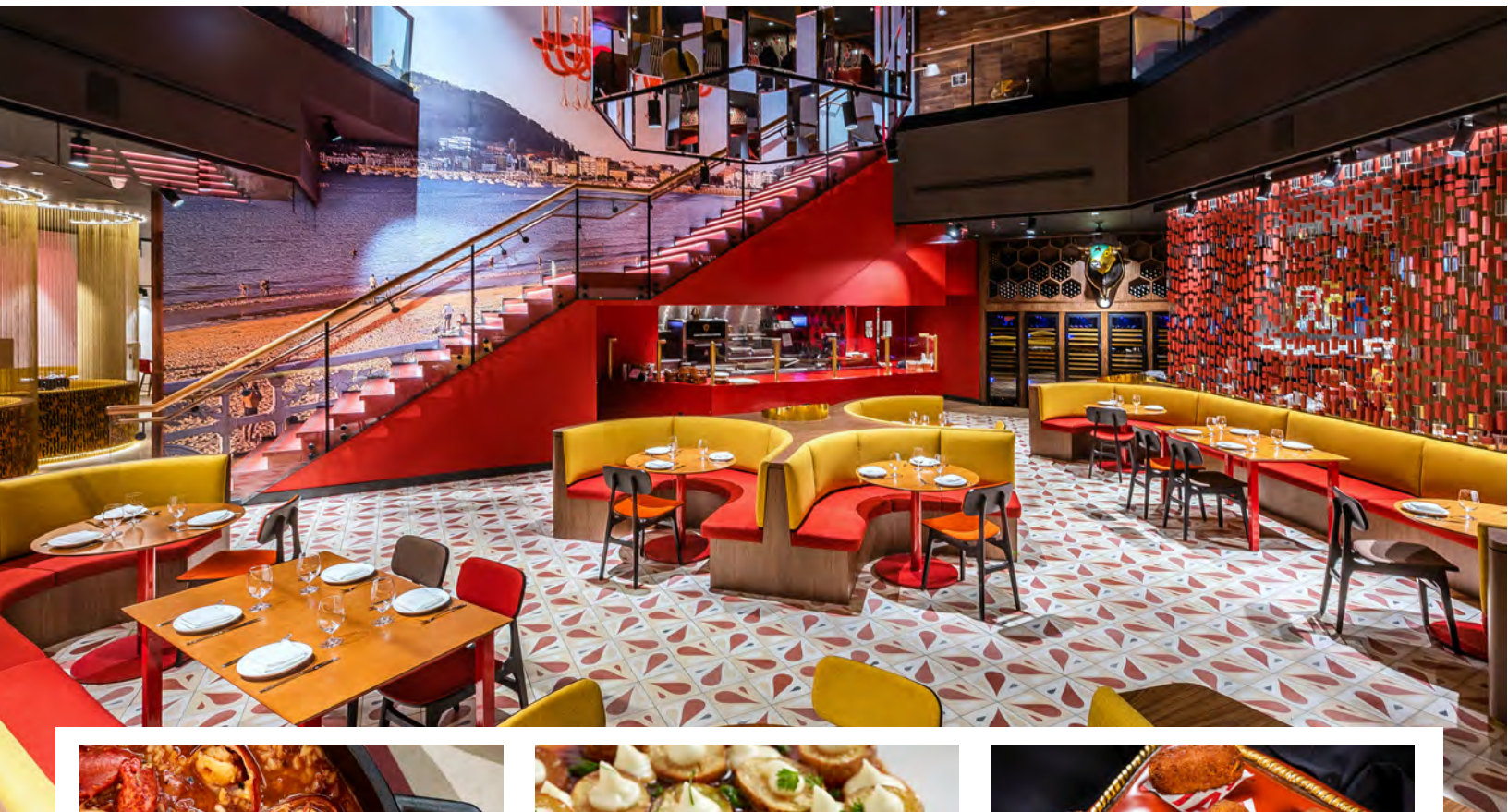
**Other Offerings?** Promenade and lakeside patios available



# JALEO BY JOSÉ ANDRÉS

*"Savor authentic Spanish tapas, paella and sangria in an inviting, vibrant atmosphere."*

Established March 2019



## OVERVIEW

### Food & Beverage Capacity:

450 Guests

### Bar Capacity:

40 Guests

**Buyouts Allowed?** Yes, both partial and full

**Large Group Capacity:** 550 Full Buyout/225 2nd floor buyout

**Private Dining Rooms Available:** Yes, 2nd floor buyout

**A/V Set-Up Available?** Yes

**Custom menus available?** Yes

**Average Lunch Price Point (per person)?** \$30++

**Average Dinner Price Point (per person)?** \$65++

**F&B Minimum? Other Offerings?** Please contact Sales Manager for additional details



# WOLFGANG PUCK BAR & GRILL

*"From our garden to your table. Make memories that last a lifetime."*

Established November 19, 2018



## OVERVIEW

### Food & Beverage Capacity:

250 Guests (dinner)

450 Guests (cocktail reception)

### Bar Capacity:

35 Guests

### Buyouts Allowed? Yes

**Large Group Capacity:** Main dining room inside sits 120 Guests, 220 reception. Semi private dining room sits 60 Guests, 75 reception. Outdoor patio sits 36 Guests, 50 reception. Chef's Table sits 18 Guests.

**Private Dining Rooms Available:** No

**A/V Set-Up Available?** Yes

**Custom menus available?** Yes

**Average Lunch Price Point (per person)?**

\$25, \$35 (with alcohol)

**Average Dinner Price Point (per person)?**

\$45, \$75 (with alcohol)

**F&B Minimum?** Yes, pricing varies depending on dates and times.

**Other Offerings?** Wolfgang Puck Signature Wines, Wolfgang Puck Signed Cook Books, Gelato Bar.



# CITY WORKS EATERY & POUR HOUSE

*Discover the ultimate sports bar—this upbeat eatery features classic American fare and an incredible beer menu!"*

Established February 6, 2020



## OVERVIEW

### Food & Beverage Capacity:

350 Guests

### Bar Capacity:

**Main Bar:** 250 guests, **Corner Patio Bar:** 60 guests,

**Small Patio Bar:** 40 guests

**Buyouts Allowed?** Yes

**Large Group Capacity:** Groups of 15-350 guests

**Private Dining Rooms Available:** Semi-private space only for 15-350 guests

**A/V Set-Up Available?** Please inquire for options

**Custom menus available?** Yes

**Average Lunch Price Point (per person)?**

\$20 \$28 (with alcohol)

**Average Dinner Price Point (per person)?**

\$30, \$38 (with alcohol)

**F&B Minimum?** Yes, pricing varies based on dates, times and size of group

**Other Offerings?** City Works has 8,632 sq. ft. of indoor dining space and a spacious outdoor patio. City Works shows an array of events on 17 flatscreen HDTV's with state of the art audio, including one enormous video wall